



Building health promoting systems fit for the future.

EuroHealthNet Activities
June 2020 – June 2021



Caroline Costongs
Director EuroHealthNet
General Council Meeting
9 June 2021

Fit For the Future

- With our expertise we support members to come out of the pandemic better prepared for future challenges.
- Our Foresight Report helps members develop strategies to face current and future challenges to public health.
- Our Health Inequalities Portal brings together the tools and evidence to show that action no longer can and has to be delayed.



Helping members shape, prepare for and respond to policy changes

9

MEMBERS BRIEFING & EXPERT ANALYSES

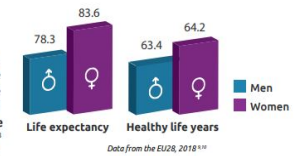
Identifying opportunities to advance the health equity agenda on the European stage



This Policy Précis looks at gender, health and inequalities. It covers differences in health status by gender, why those differences might occur, and what can be done to address gender-related health inequalities.

The Situation

There are gender-based differences in life expectancy, mortality and health outcomes. Men generally have worse health outcomes than women¹ but perceive their health as better.² Women live longer but spend fewer years in good health. The reasons for this are partly biological, but largely social and behavioural.³ ¹While women more often report experiencing mental



24

CONSULTATION RESPONSES

Making the Partnership's voice heard in the European policy creation process



301

EXTERNAL MEETINGS

Representing the partnership and its expertise towards European, national, and regional (public health) authorities and experts

Facilitating exchange & capacity building

INSPIRING INNOVATIVE FINANCING PRACTICES

- Financing e-Guide: Providing evidence to assist and inspire in developing and financing health promoting services that benefit health for all
- Sharing funding opportunities for public health in the new MFF and NextGenerationEU with the Partnership



EUROPEAN EXCHANGE ON TACKLING PRESSING HEALTH CHALLENGES

- CHRODIS+: Promoting proven policies and practices to reduce the burden of chronic diseases
- JAHEE: Collecting and sharing practices that are effective in achieving greater equity in health outcomes
- IMMUNION: Promoting vaccination uptake across the EU



Turning front-line research into innovative policies and practices

ADVANCING GLOBAL HEALTH INEQUALITIES RESEARCH

CHAIN: Collecting cutting-edge research on social determinants, and communicating its findings with policy makers and the public health community



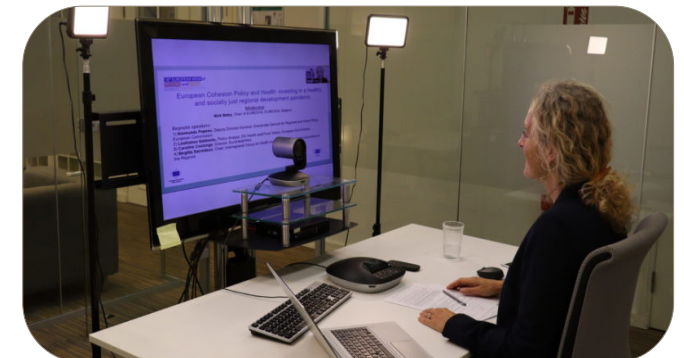
IMPROVING ACCESS TO VACCINES AMONGST UNDER-SERVED GROUPS

RIVER-EU: Leading communication to turn findings into guidelines to address equitable access



PROFILING OUR PARTNERSHIP AND CONSORTIA

- Representing our partnership in the Europe's academic world
- Taking a prominent role during the 2020 World Public Health Conference



COMMUNICATION

Amplifying our messages and expertise

MAKING CONNECTIONS AND FACILITATING EXCHANGE

- Our Communications Network helps around 50 communication experts exchange on shared issues and share resources
- Our Calls and Opportunities Alerts share exclusive opportunities for funding, training and capacity building with our partnership

LAUNCHING *THE* EUROPEAN HUB ON HEALTH INEQUALITIES

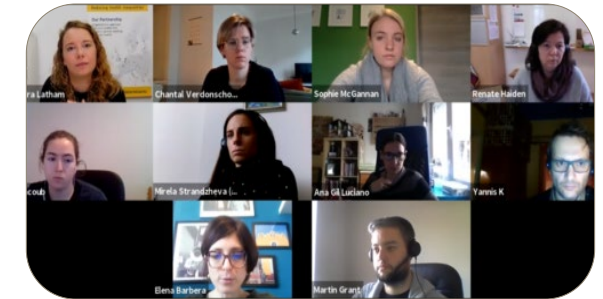
Our health inequalities portal provides expertise, tools, and a database of 800+ resources

TELLING THE STORY OF PUBLIC HEALTH

2 editions of EuroHealthNet Magazine explored members' work to mediate the pandemic and make health promotion more sustainable. Readership grew by 48%

IMPROVING ACCESS TO PUBLIC HEALTH INFORMATION

Under the Med-Dialogue Project we work with actors in Middle-Eastern and North-African countries to stimulate critical expression, access to information, and monitoring accountability of public health measures



EuroHealthNet
magazine.



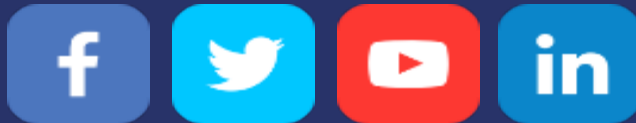
THANK YOU

Contact us

Caroline Costongs

c.costongs@eurohealthnet.eu

Follow us



EuroHealthNet is supported by the European Commission, through the EU Programme for Employment and Social Innovation (EaSI 2014-2020)