

EuroHealthNet and the WHO European Programme of Work

Synergies and Opportunities

Dr Mariana Dyakova

WHO Collaborating Centre on Investment for Health and Well-being, Public Health Wales

mariana.dyakova@wales.nhs.uk

EuroHealthNet Policy and Strategy Meeting, 24 February 2021



GIG
CYMRU
NHS
WALES

Iechyd Cyhoeddus
Cymru
Public Health
Wales

World Health Organization
Collaborating Centre on
Investment for Health and Well-being

The WHO logo is a circular emblem featuring a caduceus (a staff with two snakes) in the center, surrounded by a laurel wreath. The text 'World Health Organization' is written in a circular path around the emblem.

European Programme of Work, 2020–2025

“United Action for Better Health in Europe”



Leaving no one behind
Strengthen the leadership of health authorities

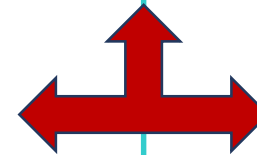


Core priorities

- I. Moving towards universal health coverage (UHC)
- II. Protecting people better against health emergencies
- III. Ensuring healthy lives and well-being for all at all ages

Four flagship initiatives:

1. The Mental Health Coalition
2. Empowerment through Digital Health
3. The European Immunization Agenda 2030
4. Healthier behaviours: incorporating behavioural and cultural insights



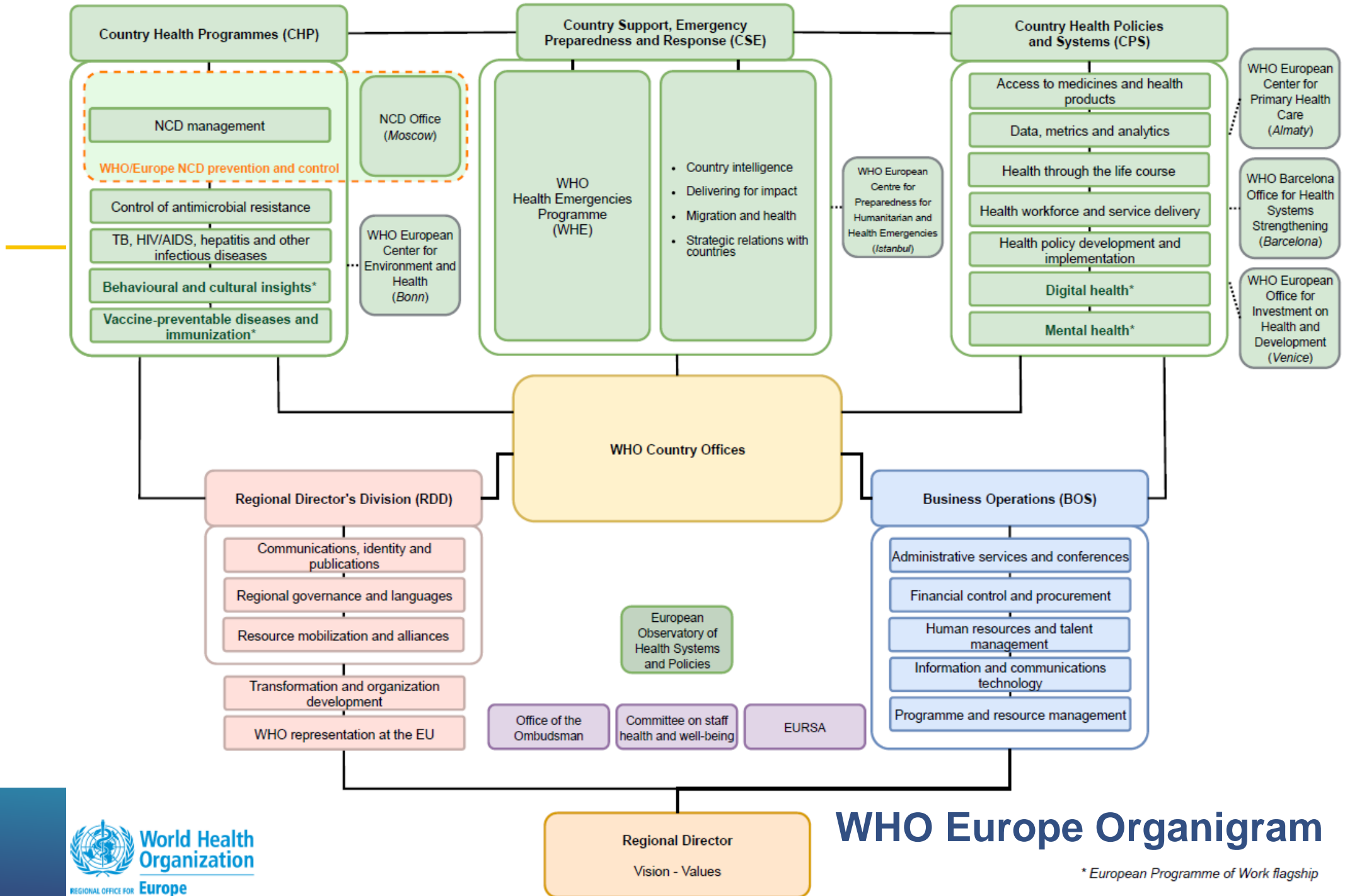
Reducing inequalities
Promoting health
Disease prevention
Public health
Sustainable development

Policy Practice Research



GIG
CYMRU
NHS
WALES

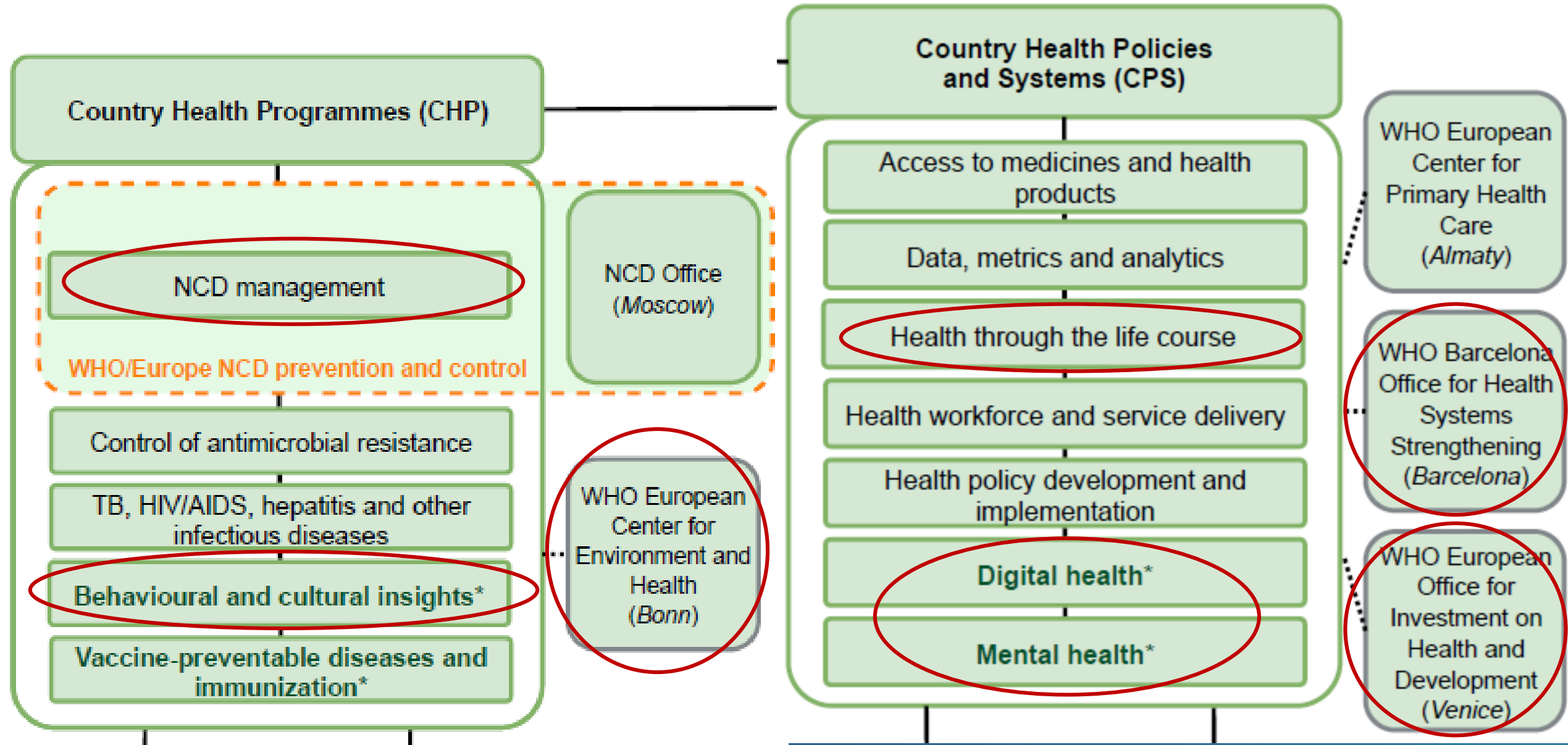
Iechyd Cyhoeddus
Cymru
Public Health
Wales



Potential 'entry points' / synergies

Other:

- Healthy Cities
- Regions for Health Network



Country Health Programmes

- **NCDs - 'best buys' and closing the implementation gap**
 - ✓ Series of '**signature initiatives**' - '**accelerators**' on specific topics, such as childhood obesity, prevention of CVD (excess salt, alcohol consumption), health literacy, etc.
 - ✓ **Cancer (prevention/treatment) - United Action Against Cancer initiative (reduce inequalities)** with a focus on: cervical cancer, breast cancer and childhood cancer)
- **Environmental health / determinants of health** – Bonn Office
- Two flagships initiatives
 - ✓ **Immunization Agenda 2030** - WHO consultation on the strategic plan for immunization
 - ✓ **Behavioural insights** - monthly policy forum update for exchange of best practices (MoH and NPFI)



GIG
CYMRU
NHS
WALES

Iechyd Cyhoeddus
Cymru
Public Health
Wales

Country Health Policies and Systems

- **The Venice Office – Economy of Wellbeing** project/initiative
- **The Barcelona Office** – addressing financial precarity/potential cuts to health
- **Mental Health:**
 - ✓ **Resolution for a Framework of Action on Mental Health** (*RC 2021*)
 - ✓ **Mental Health Coalition**
- **Digital Health** (2022) - mainstreaming innovation in health systems; **digital health literacy**
- **Public Health Services** - new initiative, exploring the role and functions of public health services during COVID-19 (*what & why worked well/not...*)
- **Primary Care (Almaty Office)** – progress beyond Universal Health Coverage into having a strong emergency response and in terms of **strengthening health and wellbeing**



GIG
CYMRU
NHS
WALES

Iechyd Cyhoeddus
Cymru
Public Health
Wales

Synergies and opportunities for EuroHealthNet

- Help **strengthen the equity / SD angle** of WHO-led initiatives
- Help **wider recognition of /participation** in initiatives – across **our/WHO network**
- **Amplify advocacy/policy impact** with **joint communications/dissemination**
- Gather / document **experiences and good practices** across Member States
- **Align with** our (new) project; and with EU projects/initiatives
- Use/link to **funding bids**, e.g. our core grant; EU bids
- **Mutual participation in / support for** working groups and events
- Establish potential / strengthen existing **TWIGs**
- **Specific activities, such as:**
 - ✓ Develop **papers or a policy dialogues** on various topics
 - ✓ Help find **'signature solutions'**
 - ✓ Re-energize the concept of **'best buys'** (attractive to policy makers/investors)
 - ✓ Follow on work on **sustainable financing** for health and wellbeing
 - ✓ ...



GIG
CYMRU
NHS
WALES

Iechyd Cyhoeddus
Cymru
Public Health
Wales

Discussion

- What are our **strengths / added value** to the EPW?
- What can be **our role** in collaborating with the WHO?
- What could be the **priority areas of collaboration**:
 - ✓ **Synergetic & mutually beneficial**
 - ✓ Network & members **currently/soon to be working on**
 - ✓ Where the **network and its members** can bring the **most value/expertise/experience**
 - ✓ Synergetic **with other** collaborative work, e.g. with the EU, IANPHI, etc.
 - ✓ Clearly defined priorities – over a period / flexible
 - ✓ Capacity and funding available
 - ✓ Key priorities (3-5 max) + on-going collaborative support (e.g. working groups, meetings...)
- **Next steps?**



GIG
CYMRU
NHS
WALES

Iechyd Cyhoeddus
Cymru
Public Health
Wales